







SUNPLUS

2Q 2024 Investor Conference

Spokesman: Joseph Chuang
Tel: 886-3-5786005
E-mail: joseph@sunplus.com

Make difference

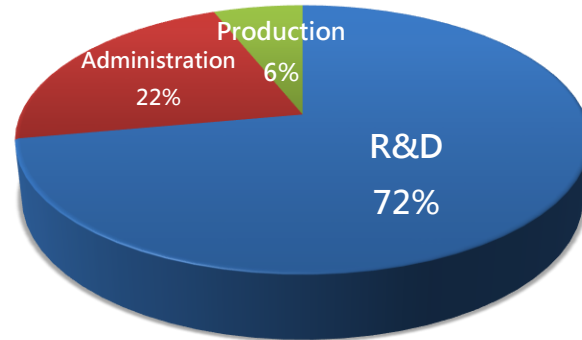
Sunplus Affiliates

	Profession	Shareholding	Stock code
 SUNPLUS	Sunplus Technology Co., Ltd. (592m shares) Automotive, Audio IC & IP Design	100%	TWSE#2401
	Generalplus Technology Co., Ltd. (109m shares) Speech/Music, LCD, Digital Video & Image SoC Turnkey Solutions, Micro-Controllers	48%	TWSE#4952
	Sunplus Innovation Technology Inc. (58m shares) UVC & HID Control IC	57%	TWSE#5236
	Jumplux Technology Inc. (24m shares) Automotive MCU & USB Storage ASIC	100%	

* Based on 2024/6/30 Consolidated-holding by Sunplus

Human Resources

Global Employees

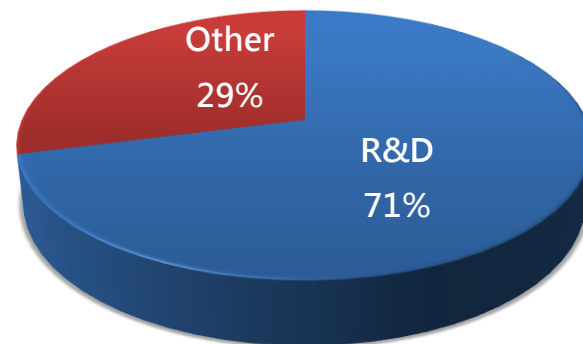


Global Employees/ R&D

1,053 / 760

42% Master above

Sunplus HR



Sunplus HR/ R&D

327 / 232

63% Master above

* Data by 2024/6/30

1H Consolidated Results

(NT\$ million)	2024 1H		2023 1H		YoY
Net Sales	3,134	100%	2,612	100%	20%
COGS	1,606	51%	1,378	53%	17%
Gross Margin	1,528	49%	1,234	47%	24%
R&D Expenses	995	32%	1,016	39%	(2%)
SG&A Expenses	450	14%	348	13%	30%
Operating Net Profit (Loss)	82	3%	(130)	(5%)	(163%)
Non-Op. Gain (Loss)	393	13%	118	5%	232%
Net Income (Loss)	425	14%	(51)	(2%)	(937%)
Other Comprehensive Income	36	1%	(3)	(0%)	(1349%)
Total Comprehensive Income	460	15%	(54)	(2%)	(959%)
Net Profit Attributable To					
Shareholders of the parent	234	7%	(175)	(7%)	(234%)
Non-controlling interests	190	6%	124	5%	53%
EPS (NT\$)	0.40		(0.30)		

** EPS based on outstanding 591,994,919 shares on 2024/06/30

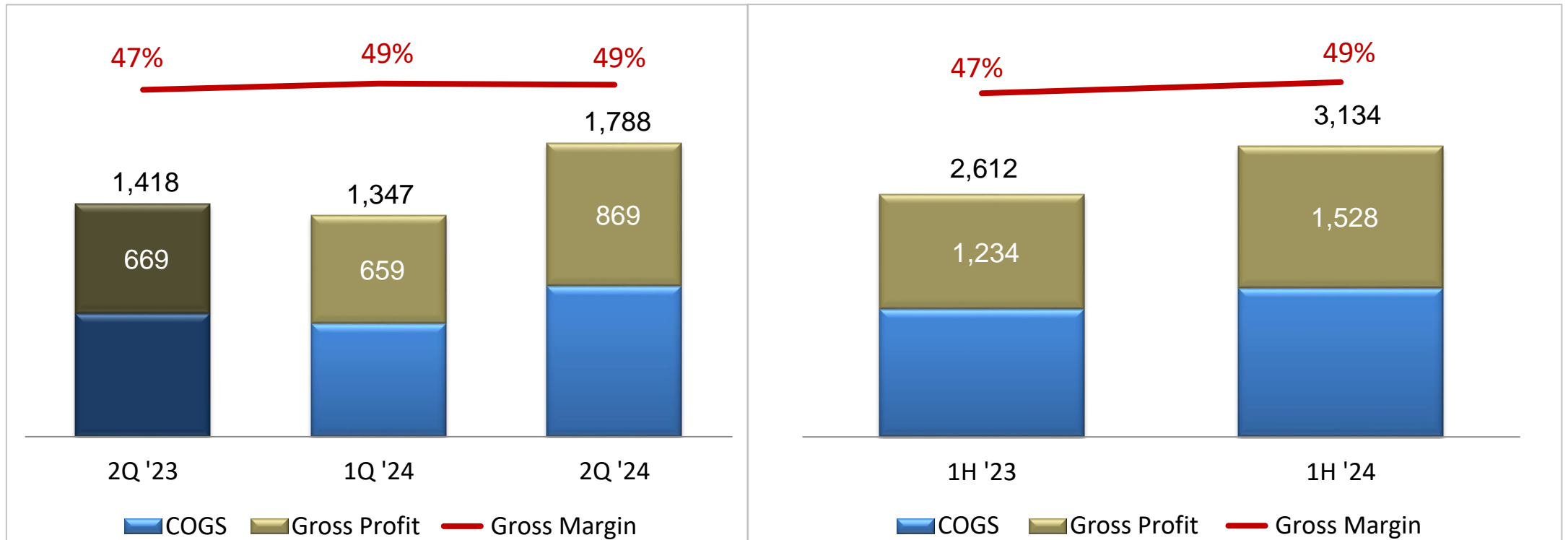
Q2 Consolidated Results

(NT\$ million)	2024 2Q		2024 1Q		2023 2Q		QoQ	YoY
Net Sales	1,788	100%	1,347	100%	1,418	100%	33%	26%
COGS	919	51%	687	51%	750	53%	34%	23%
Gross Margin	869	49%	659	49%	669	47%	32%	30%
R&D Expenses	509	28%	487	36%	535	38%	4%	(5%)
SG&A Expenses	282	16%	168	12%	175	12%	68%	61%
Operating Net Profit (Loss)	78	4%	4	0%	(42)	(3%)	1755%	(287%)
Non-Op. Gain (Loss)	37	2%	356	26%	65	5%	(90%)	(43%)
Net Income (Loss)	112	6%	313	23%	(2)	(0%)	(64%)	(6164%)
Other Comprehensive Income	55	3%	(19)	(1%)	(65)	(5%)	(385%)	(184%)
Total Comprehensive Income	167	9%	293	22%	(67)	(5%)	(43%)	(348%)
Net Profit Attributable To								
Shareholders of the parent	3	0%	232	17%	(83)	(6%)	(99%)	(103%)
Non-controlling interests	110	6%	81	6%	81	6%	36%	35%
EPS (NT\$)	0.01		0.39		(0.14)			

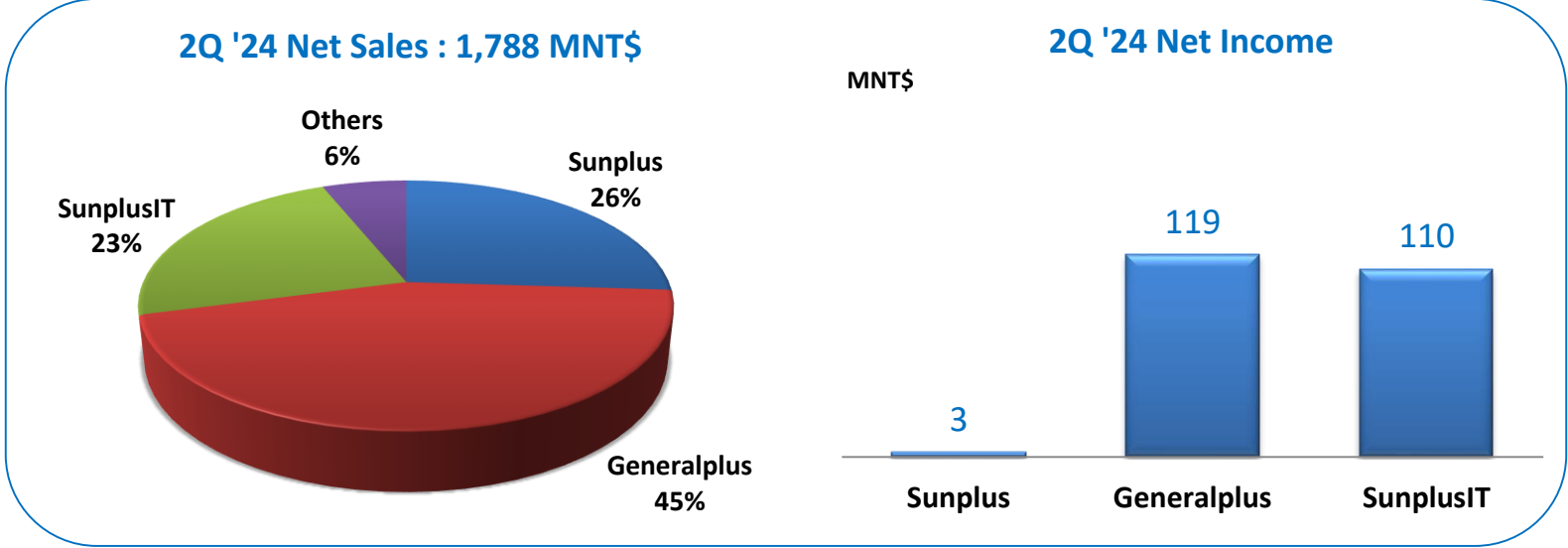
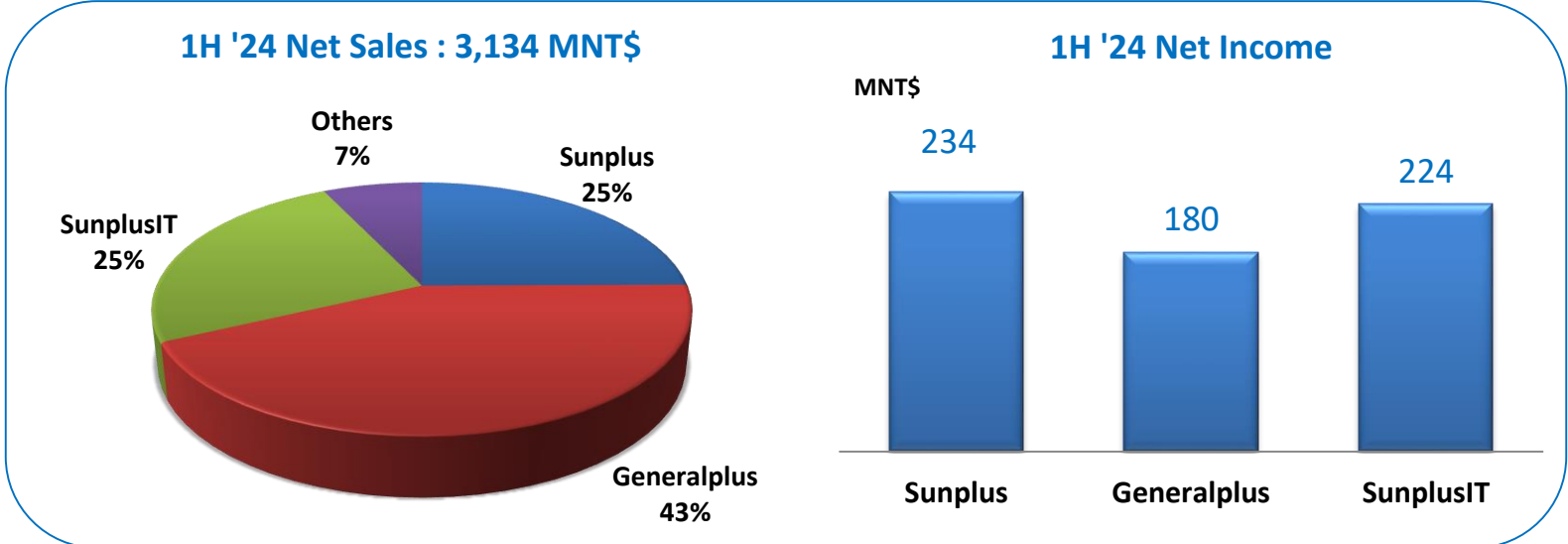
** EPS based on outstanding 591,994,919 shares on 2024/06/30

Consolidated Net Sales & Gross Profit

NT\$ million



2024 Affiliates' Contribution



Q2 Consolidated Balance Sheet

(NT\$ million)	<u>2024 2Q</u>	<u>2024 1Q</u>	<u>2023 2Q</u>	<u>QoQ</u>	<u>YoY</u>
Total Assets	14,776	14,185	14,943	4%	(1%)
Cash and Cash equivalents	4,753	4,423	3,895	7%	22%
Financial asset at fair value through profit or loss - current	1,326	1,262	1,763	5%	(25%)
Inventory	1,214	1,258	1,774	(4%)	(32%)
Equity Method Investments	779	791	937	(1%)	(17%)
Financial asset at fair value through profit or loss - non-current	1,638	1,656	1,516	(1%)	8%
Total Liabilities	3,783	3,318	4,052	14%	(7%)
S-T Bank Loans	197	162	274	22%	(28%)
Account Payable	596	364	275	64%	117%
Other current liabilities	1,119	816	1,623	37%	(31%)
Total Shareholder Equity	8,725	8,644	8,738	1%	(0%)
ROE%	3.86%	2.88%	(0.47%)		
Net Asset Value per Share (NT\$)	14.83	14.69	14.85		

Cash Flows

(NT\$ million)	<u>2024 1H</u>	<u>2023 1H</u>	<u>YoY</u>
From Operation	481	266	81%
From Investment	11	(1,156)	(101%)
From Financing	150	355	(58%)
Net Cash Flow in (out)	661	(533)	(224%)
<u>Cash and Cash equivalents</u>	<u>4,753</u>	<u>3,895</u>	<u>22%</u>
Financial asset at fair value through profit or loss	1,326	1,763	(25%)
<u>Total Amount available for use</u>	<u>6,079</u>	<u>5,658</u>	<u>7%</u>

(NT\$ million)	<u>2024 2Q</u>	<u>2024 1Q</u>	<u>2023 2Q</u>	<u>QoQ</u>	<u>YoY</u>
From Operation	370	111	420	232%	(12%)
From Investment	(64)	75	(719)	(186%)	(91%)
From Financing	18	132	75	(86%)	(76%)
Net Cash Flow in (out)	330	331	(221)	(0%)	(249%)
<u>Cash and Cash equivalents</u>	<u>4,753</u>	<u>4,423</u>	<u>3,895</u>	<u>7%</u>	<u>22%</u>
Financial asset at fair value through profit or loss	1,326	1,262	1,763	5%	(25%)
<u>Total Amount available for use</u>	<u>6,079</u>	<u>5,685</u>	<u>5,658</u>	<u>7%</u>	<u>7%</u>

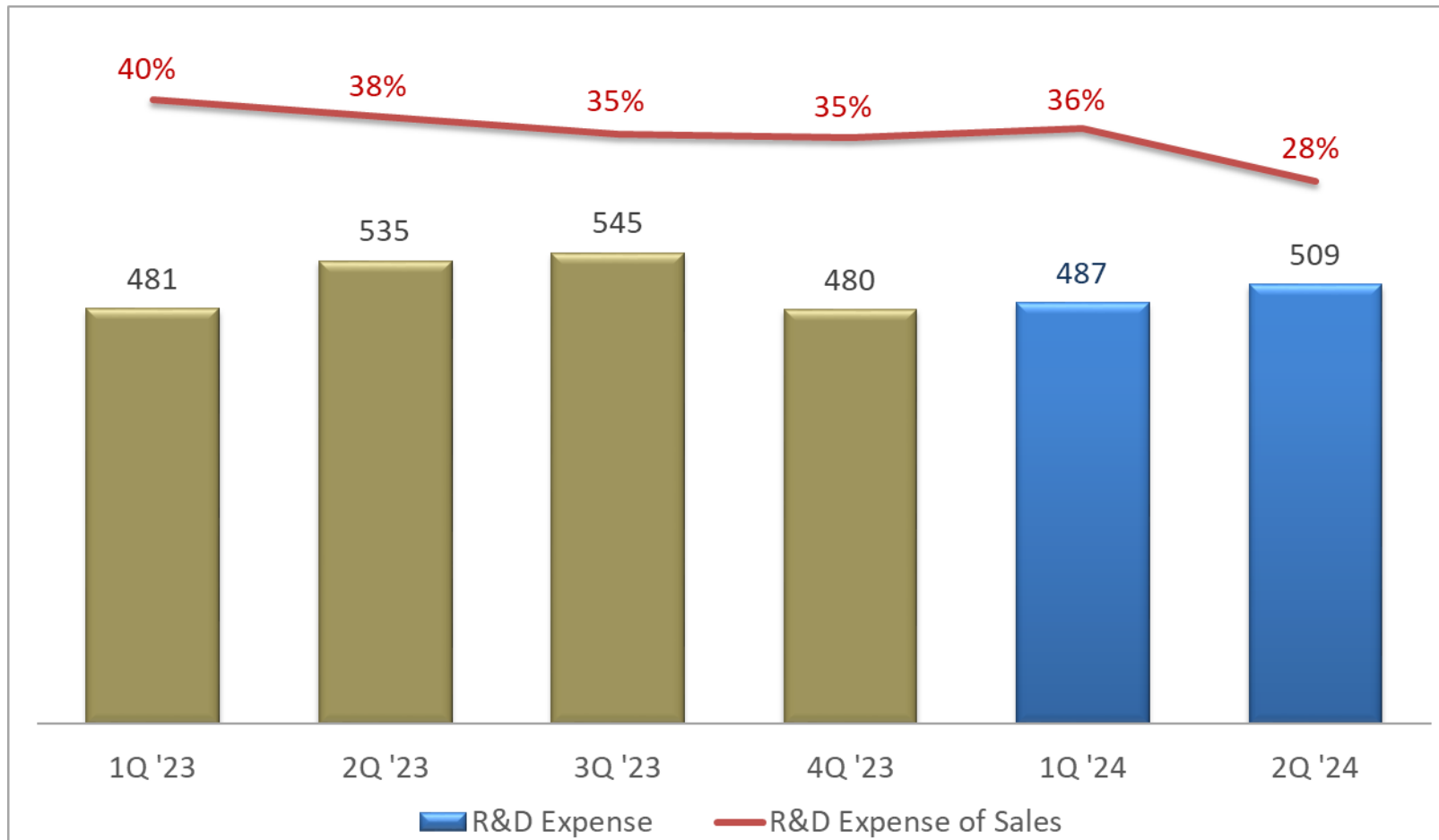
Non-Operating Gain

(NT\$ million)	<u>2024 1H</u>	<u>2023 1H</u>	<u>YoY</u>
Other Income	50	32	58%
Exchange Gain (Loss)	46	8	448%
Gains on Financial Assets (Liabilities) at Fair Value through Profit or Loss	(10)	99	(110%)
Investment Gain Recognized under Equity Method	(21)	(32)	(35%)
Disposal of investment interests under equity method	310	0	
<u>Non-Operating Gain</u>	<u>393</u>	<u>118</u>	<u>232%</u>

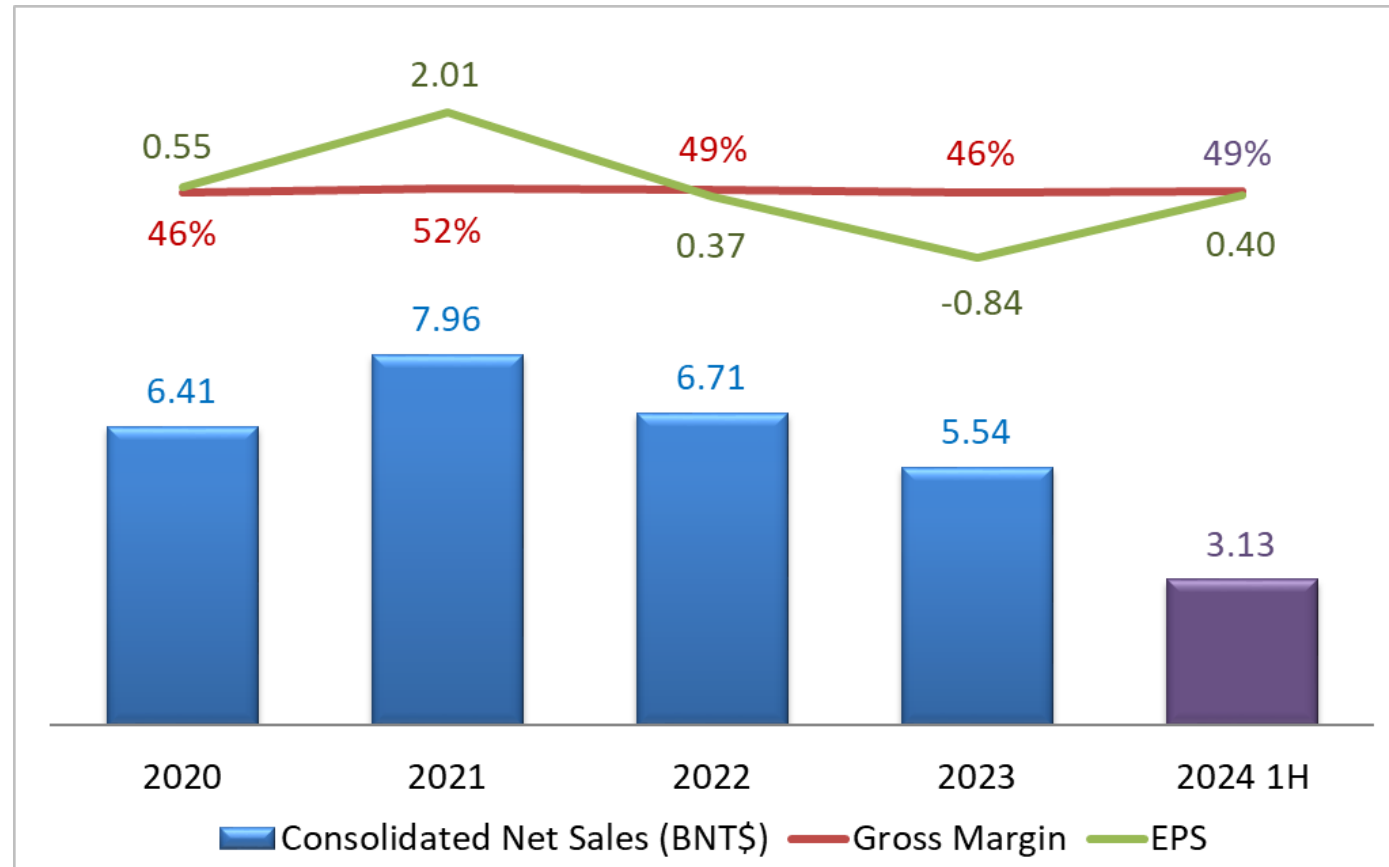
(NT\$ million)	<u>2024 2Q</u>	<u>2024 1Q</u>	<u>2023 2Q</u>	<u>QoQ</u>	<u>YoY</u>
Other Income	20	30	21	(33%)	(5%)
Exchange Gain (Loss)	13	34	15	(63%)	(19%)
Gains on Financial Assets (Liabilities) at Fair Value through Profit or Loss	1	(11)	25	(108%)	(97%)
Investment Gain Recognized under Equity Method	(16)	(5)	(6)	232%	151%
Disposal of investment interests under equity method	9	301	0	(97%)	
<u>Non-Operating Gain</u>	<u>37</u>	<u>356</u>	<u>65</u>	<u>(90%)</u>	<u>(43%)</u>

R&D Expenses

NT\$ million



Financial Statement



Sunplus Products Profolio

Automotive

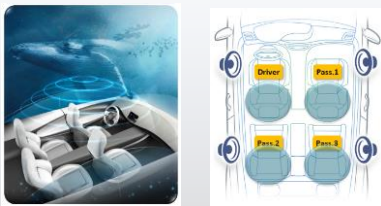
Cockpit Electronics



Automated Driving



In-cabin Acoustics



Audio

Speaker Out



Wireless Connection



Speech In



Plus 1

C1



C3



DVD



Automotive

Inside and Around the Cockpit



Cockpit Electronics

IVI
Display Audio
Cluster
HUD



Automated Driving

AVM
DMS/IMS
ADAS
E-Mirror
APA



In-cabin Acoustics

Spatial Sound
Auto-EQ
EC/NR
ITU-T Lab



Cockpit Electronics

Display Audio

Connects Vehicle to Person (Personal Device)



Apple might keep on enhancing the in-car XP



Partnering with Automakers



Focus on Deeper Integration (with Car)

Expanding App Ecosystem

Focus on Customization

iCockpit Solution

• Cluster



• In-Vehicle-Infotainment

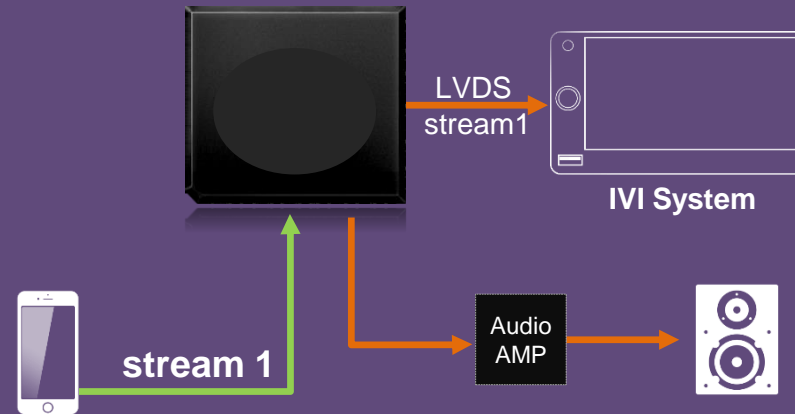


• AVM/ADAS



CarPlay Multi-Stream

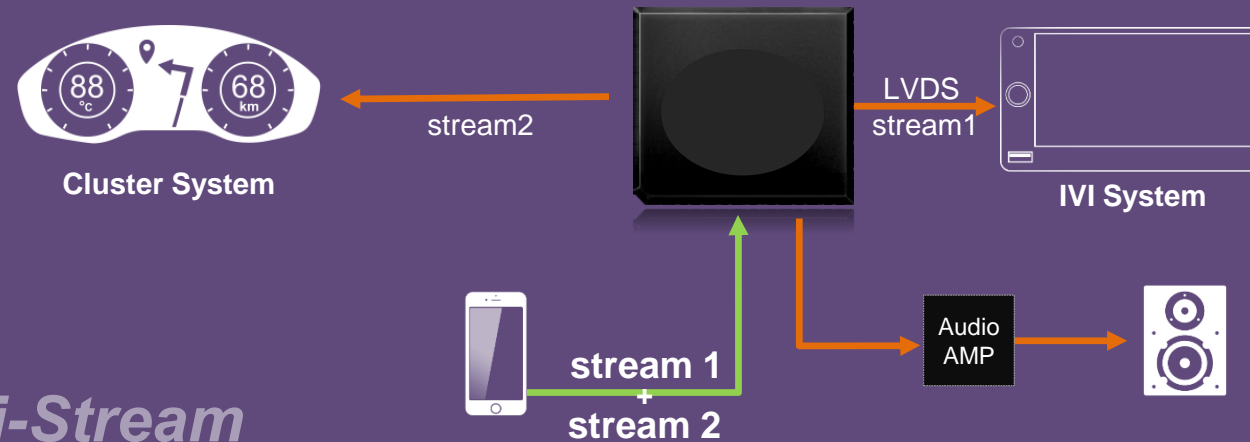
Classic CarPlay



■ Stream 1: CarPlay Functions

- Navigation, Music, Telephony, and Siri, etc.

CarPlay Multi-Stream



CarPlay Multi-Stream

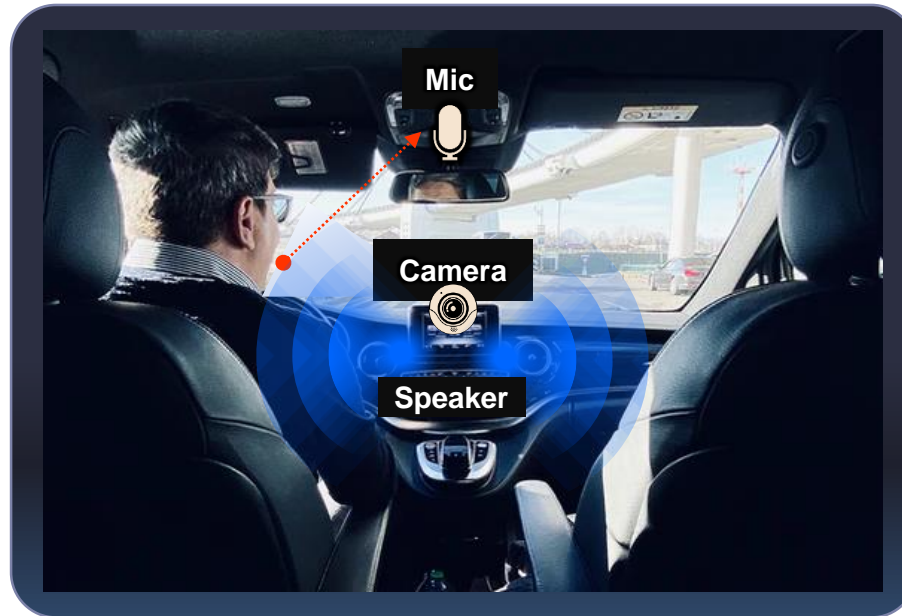
■ Stream 2: Alternative Functions

- Navigation, Sound Effect Spectrum, or Album Info
- To Cluster or HUD

iCockpit: IVI+Cluster



iCockpit : IVI+ADAS



Driver ID.



Face
Detection

Face
Recognition

Voice
Recognition



Driver Monitor System
(DMS)



Face
Detection

Driver Distraction / Fatigue
Detection

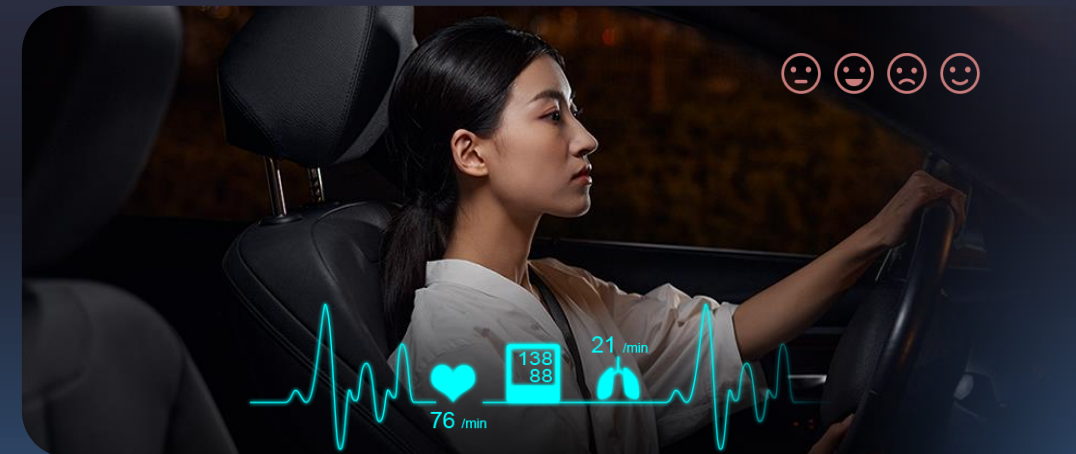
Voice
Assistant



Driver Monitoring System – Vision-based



Driver and Interior Monitoring



Motorcycle Cluster Market

- Scooter cluster supports smart phone link and mirroring
- Large displacement motorcycle supports CarPlay & Android Auto



Phone link
&
Mirroring

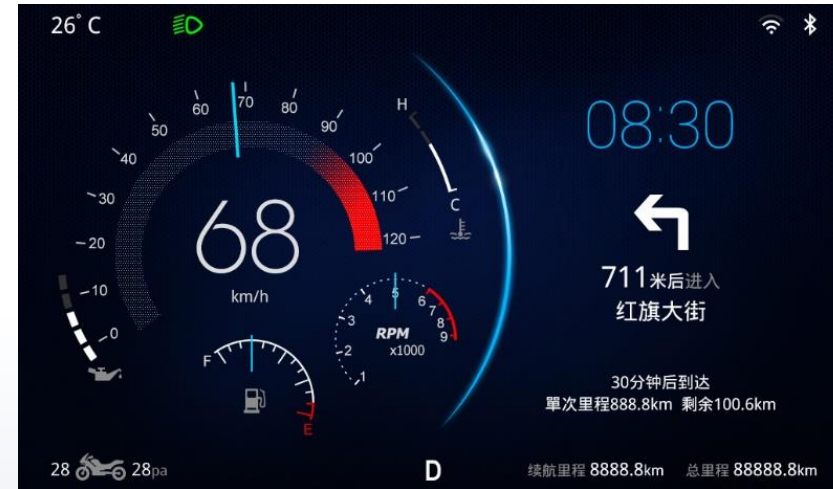


CarPlay
&
Android Auto



Motocycle Cluster solution

- 4 types reference for UI Layout (cluster, navigation, turn-by-turn, cluster + navigation)



Motocycle Cluster solution

- Wireless Connection by WiFi and Bluetooth_1 Module
- Support Helmet 1 & Helmet 2 by Bluetooth_2 Module



Automated Driving

ADAS Applications

AVM



AR HUD



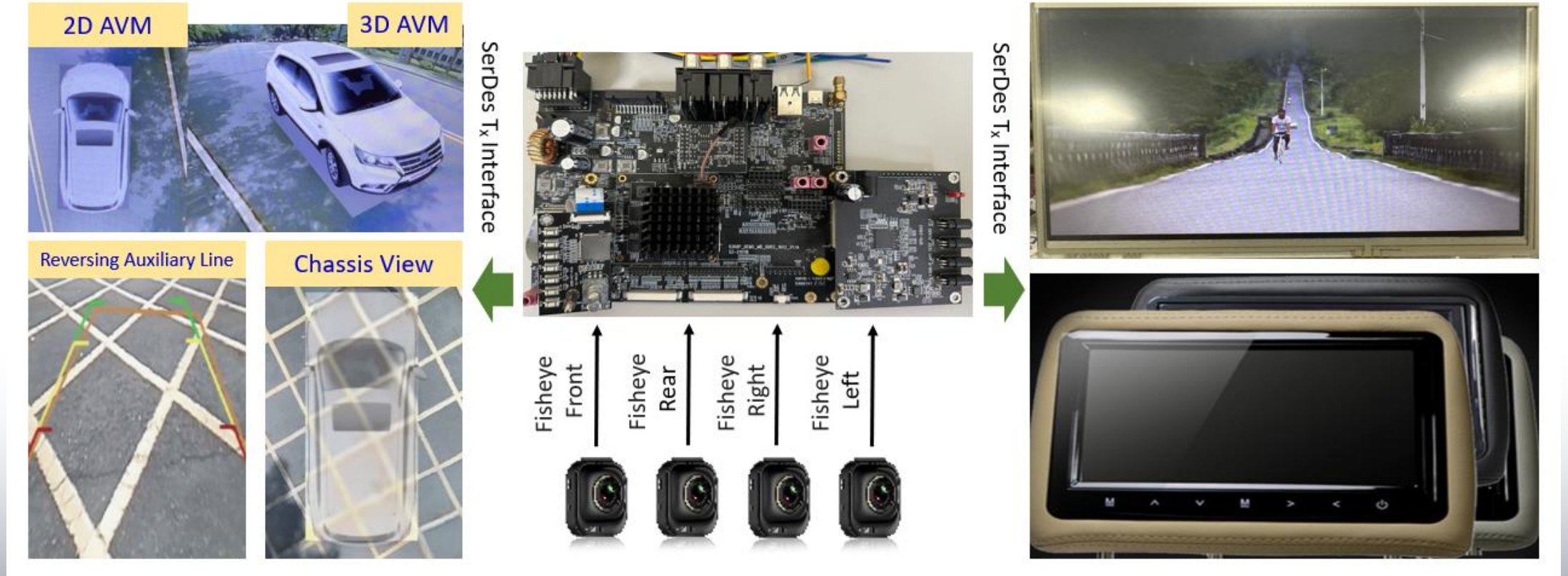
APA



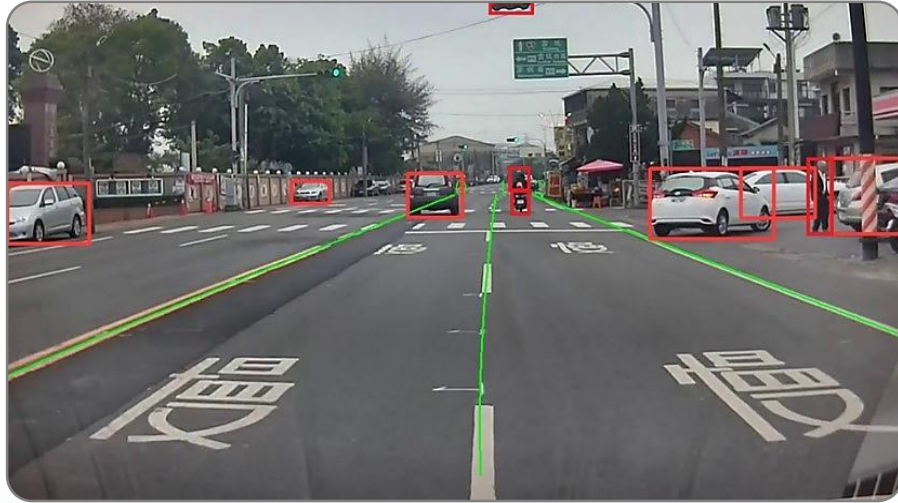
E-Mirror/CMS/DMS



AVM

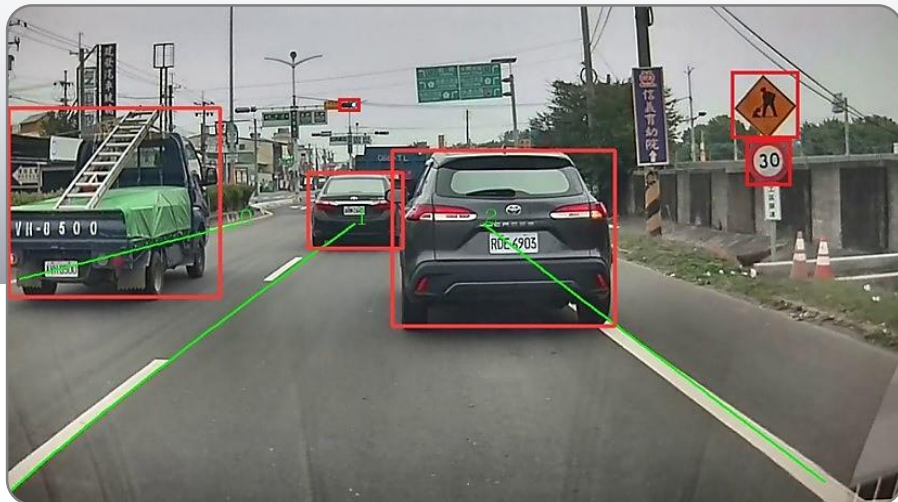


Smart Vision Sensors



■ FHD camera inputs Detection:

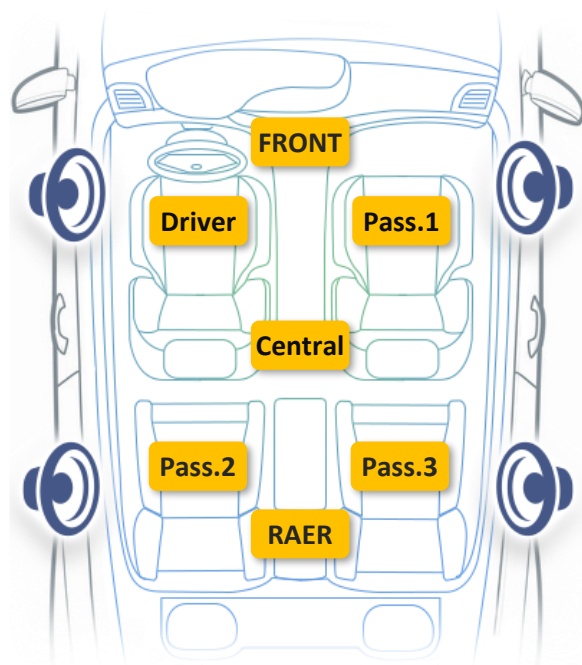
- Motorcycles
- Cars
- Traffic lights
- Traffic signs
- Traffic lanes
- Pedestrians



Immersive Sound

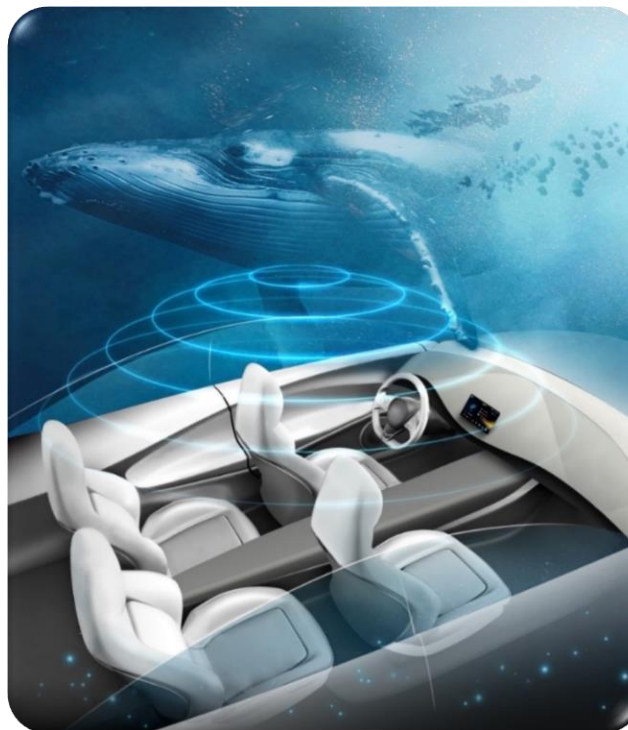
Joy – In-cabin Acoustics

Sound Field with IMS



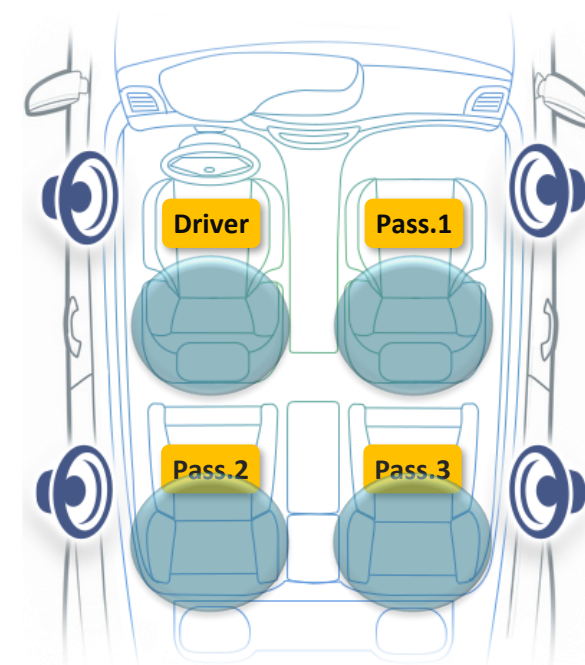
The IMS sees the occupants and feeds the info to IVI for optimal sound field settings.

Immersive Sound



Bringing the 3D surround technology, such as Dolby Atmos™, or Sunplus Spatial Sound to the cabin.

Sound Bubble (w/ ANC)

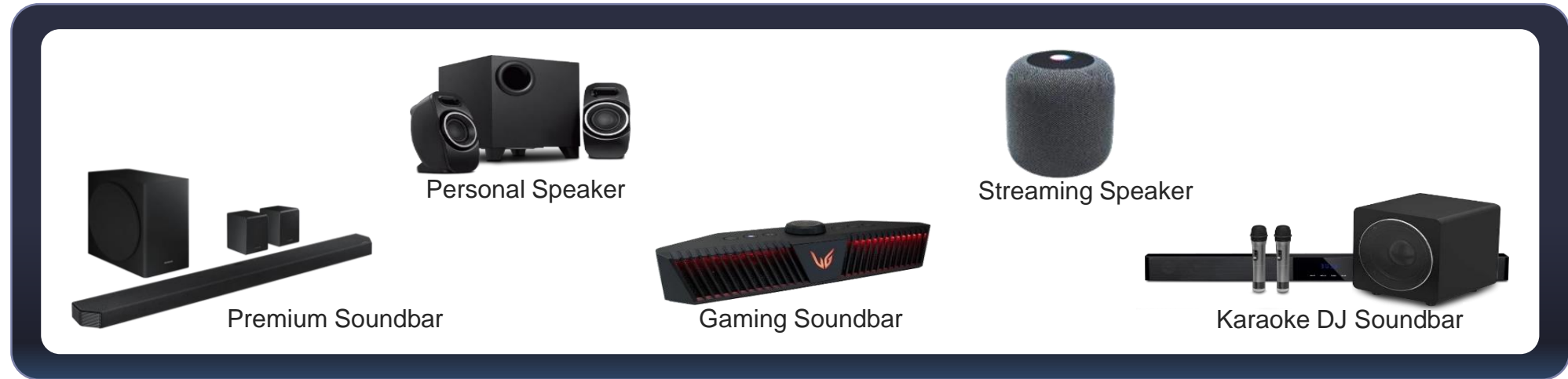


Giving every occupants a quiet zone, or independent listening zone.

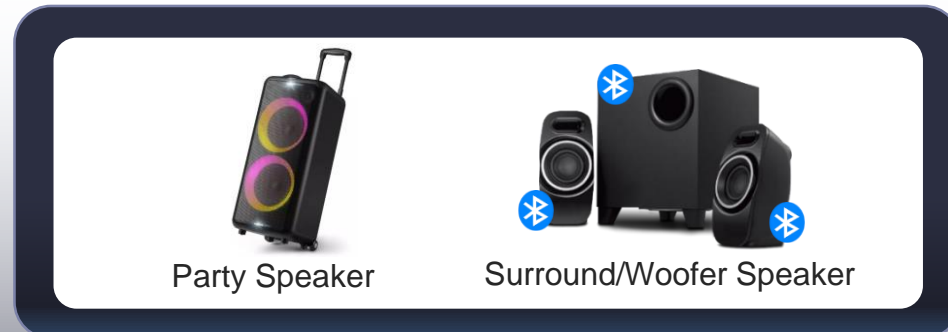
Audio

Audio Solutions

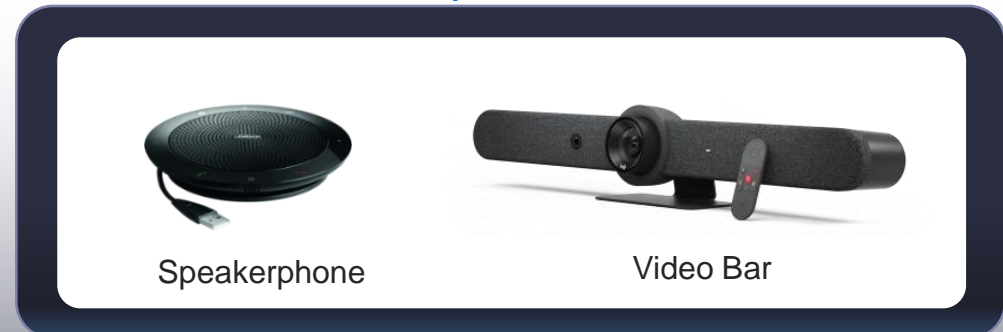
Speaker Out



Wireless Connection



Speech In



Soundbar

- Bridging the gap of Flat-panel HDTV & Home Theater



Best Cost-Performance Soundbar Solution

3D Sound Effects

- Dolby ATMOS v1.8
- DTS: X, IMAX enhanced
- MPEG-H
- Sunplus Spatial Sound

AI Sound Classifier

- Advanced AI algorithms accurately classify media content

Room Correction

- Optimize the acoustics of Main Bar, Subwoofer for room

Bluetooth v5.3

- LE Audio, LC3/LC3plus Codecs
- Multi-stream, Broadcast

Audio Streaming

- + External DTS Play-Fi Module
- + WiFi Module (Airplay-2, Alexa, etc.)

Sound Tuning Tool

- Powerful GUI tuning tool supports arbitrary sound adjustment

3rd-party Algorithm

- Capable of compatible to customer legacy sound algorithm



Soundbar with surround



Target Market

Innovative Bluetooth Audio ecosystem is creating



Party Speaker



Gaming / PC Soundbar



S+ Spatial Sound 3D
Gaming/PC Soundbar

Conference Speaker

Conference Speaker

SPA101
Acoustic Echo Cancellation
Noise Reduction

Demo Video

Noise Reduction Acoustic Echo Cancellation

airlyra

Video Bar

VideoBar | SPA100P
S+ Audio Barrier
S+ AI ClearVoice

Audio Barrier

S+ AI ClearVoice

airlyra

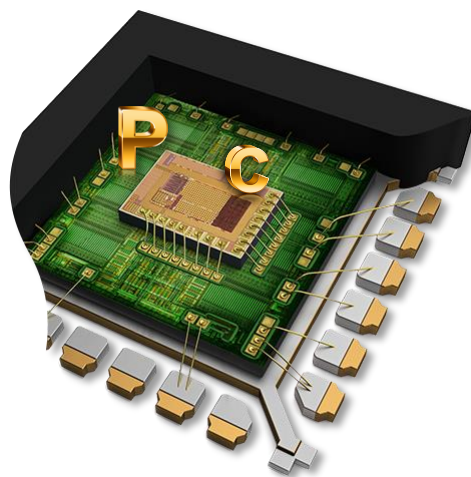
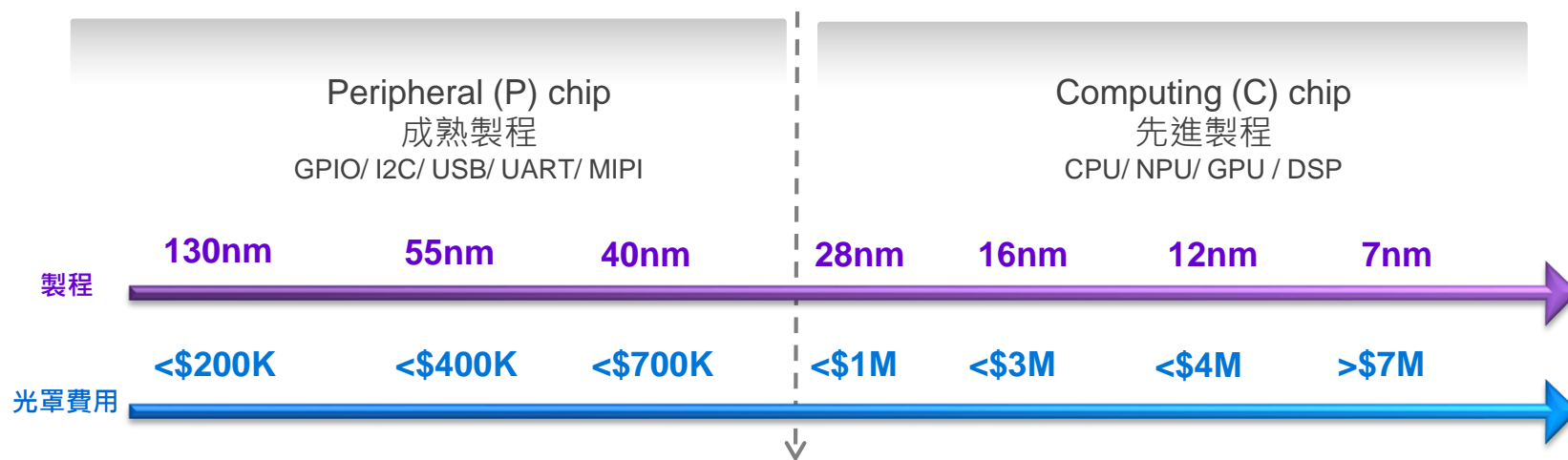
Demo Video

SUNPLUS

Plus 1

Plus1：共享智能運算Chiplet架構

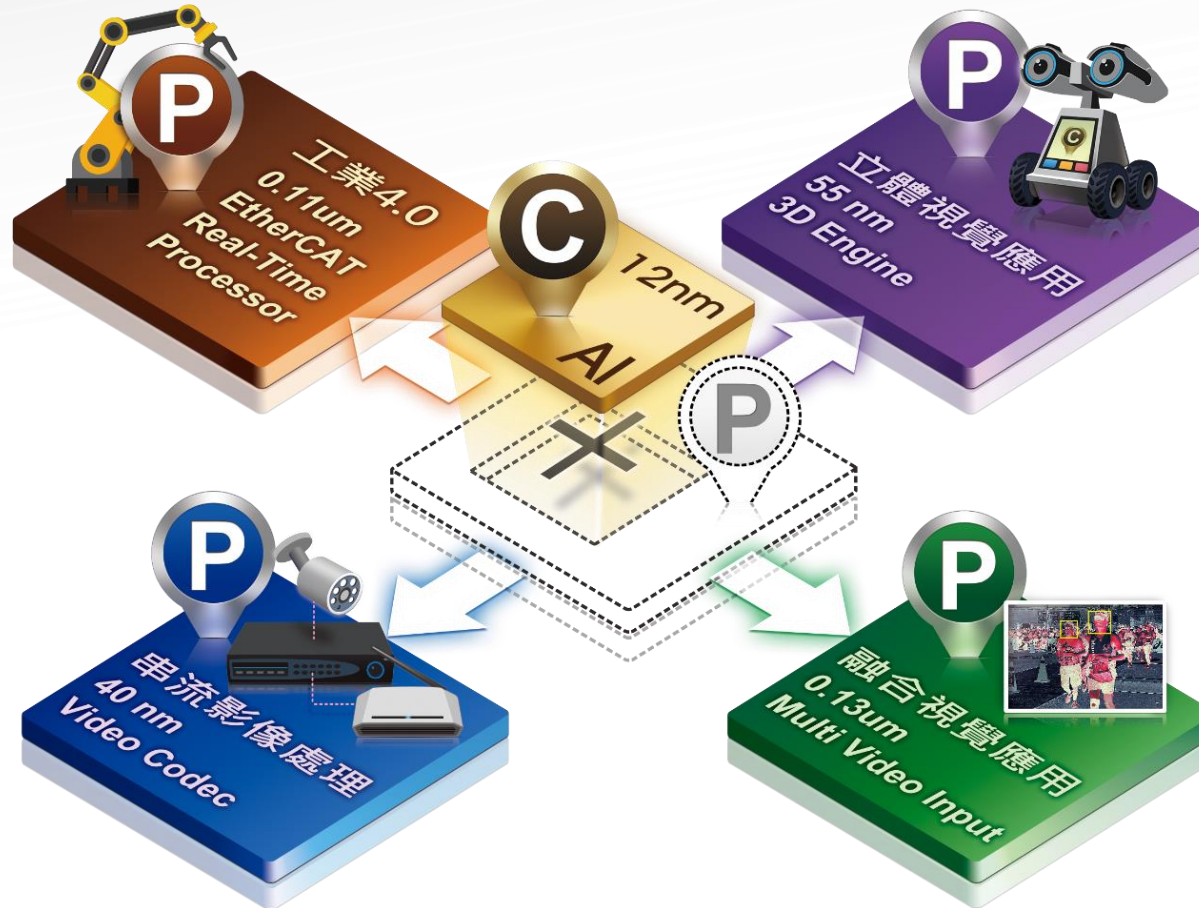
通用高效算力結合專用周邊的 AI on Chip 解決方案



C1 – IOT LINUX CHIP



+ AI on Chip EVERY



C3V Application : Robot Market

Smart Robot everywhere in the world

■ Applications

- Robot vacuums
- Automatic lawn mower
- Long Term Care Monitoring System
- Camera Drone
- Video Conference
- Autonomous Robot
- DMS





SUNPLUS



Make difference